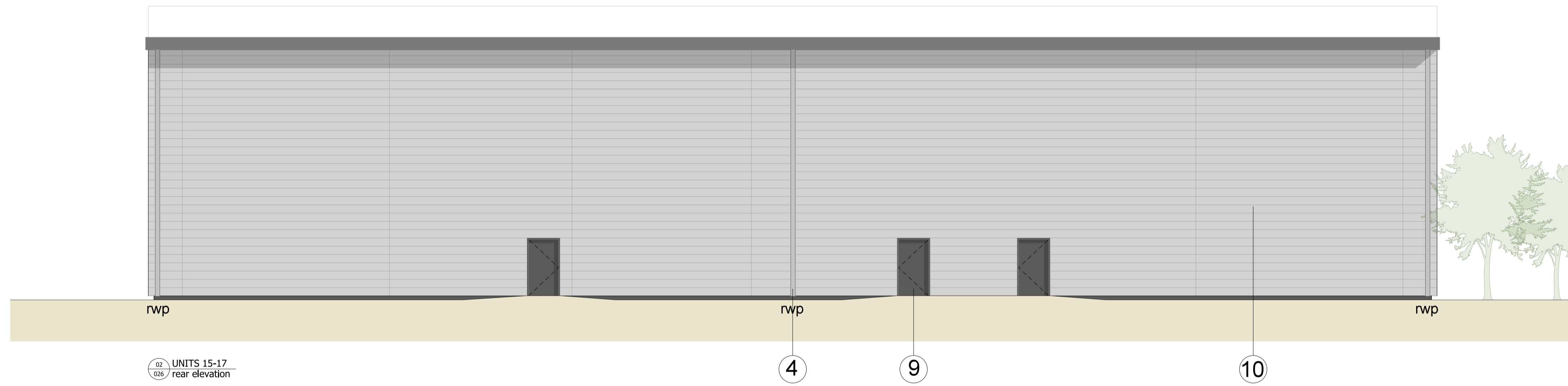
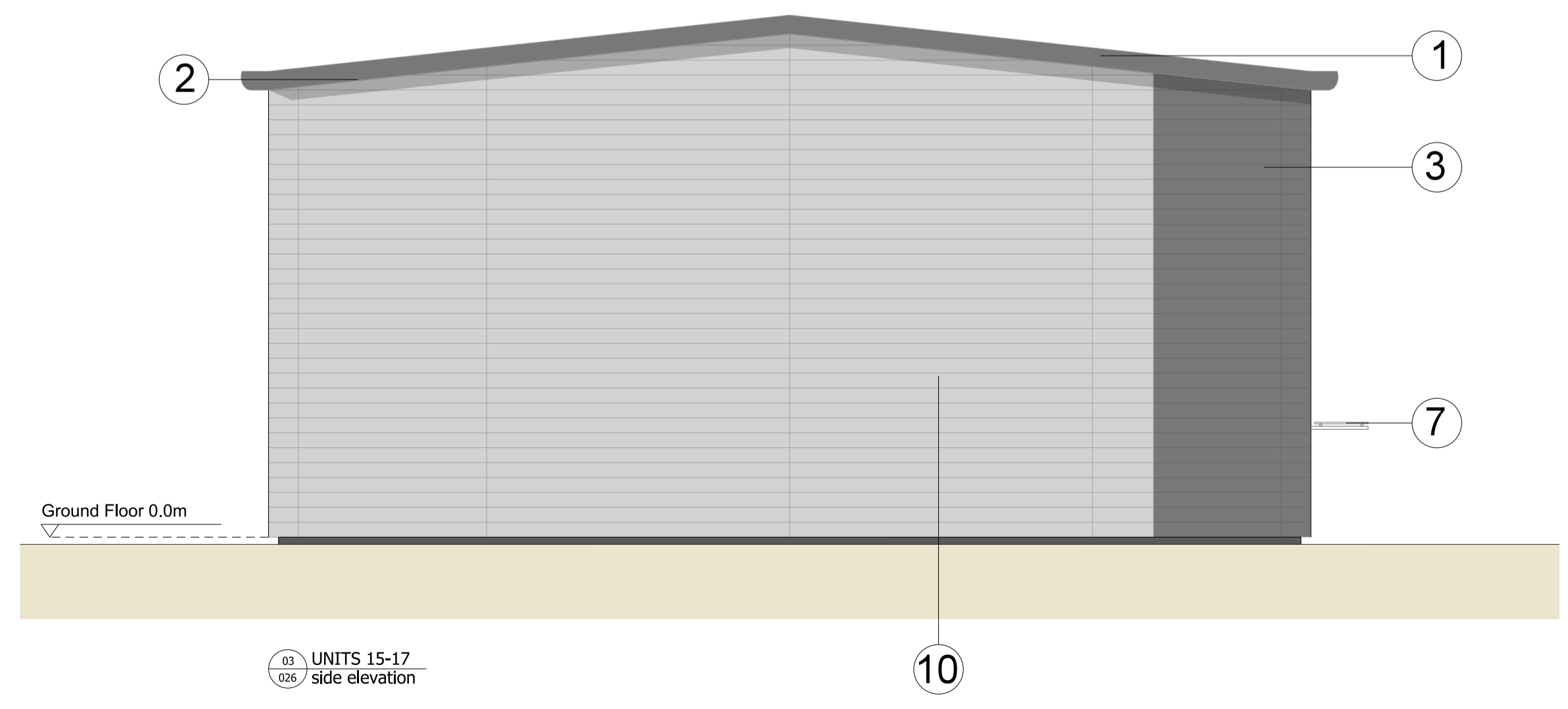


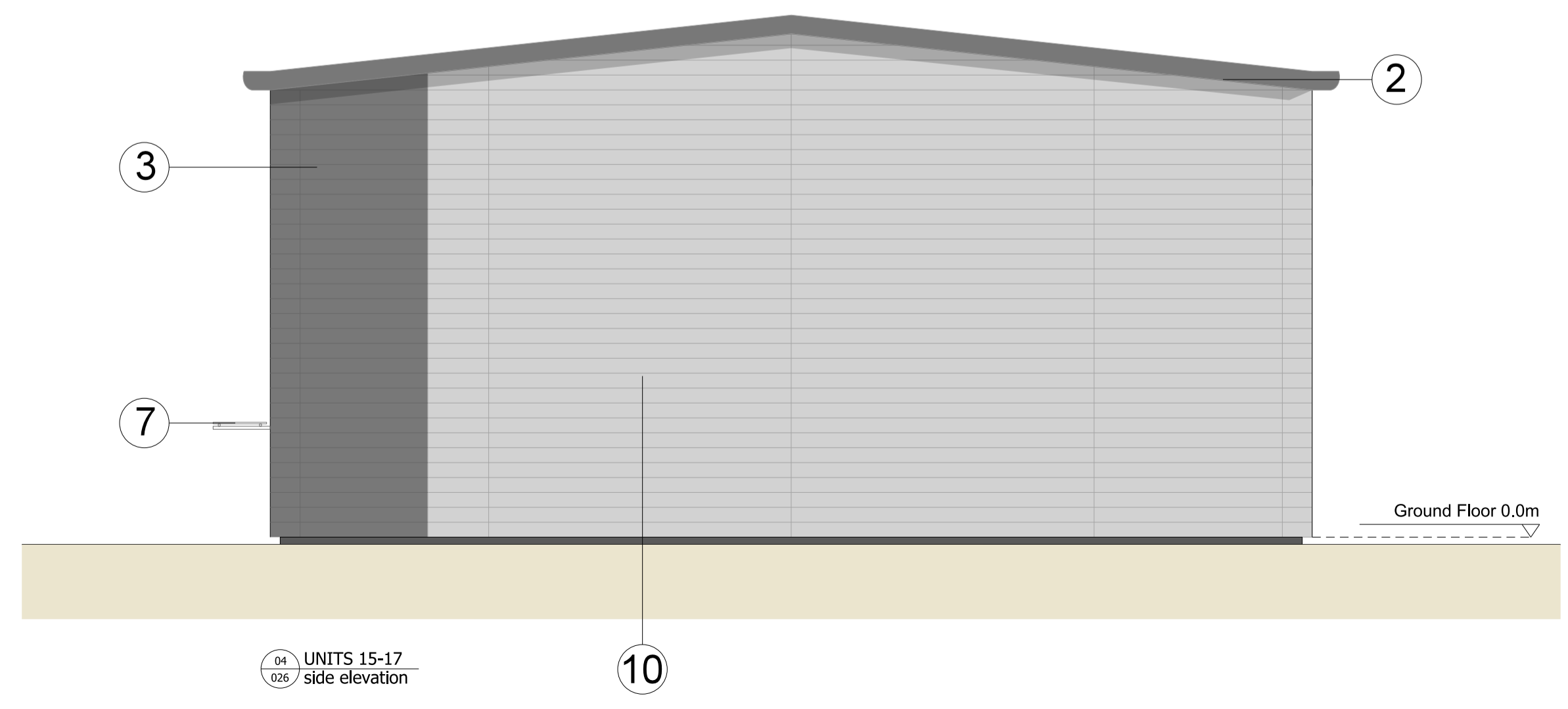
01 UNITS 15-17  
026 / front elevation



02 UNITS 15-17  
026 / rear elevation



03 UNITS 15-17  
026 / side elevation



04 UNITS 15-17  
026 / side elevation

KEY	
①	Built-up roof system Colour :Goosewing Grey
②	Eaves and verge flashings, Zeus
③	300MR profile built-up cladding system Colorcoat Prisma - Zeus
④	Rainwater pipe, colour to match cladding behind
⑤	PPC Aluminium double glazed curtain walling, colour RAL 7016
⑥	PPC Aluminium double glazed windows - colour RAL 7016
⑦	Cantilevered glass canopy
⑧	Loading door, colour RAL 7016
⑨	Steel fire escape door, colour RAL 7016
⑩	Horizontal Trapezoidal built-up cladding system - Corus Colorcoat Prisma - RAL 9006/Sirius
⑪	Louvre zone coloured to match cladding
⑫	1.2m PPC metal unit number

Rev	Description	Chk	Date

Peer House  
8 -14 Verulam Street  
London WC1X 8LZ  
tel +44(0)20 7400 2120  
enquiries@cornisharchitects.com  
www.cornisharchitects.com

**cornisharchitects**

RIBA Chartered Practice

Project Title: **KINGSTON BUSINESS PARK**

Drawing Title: **UNITS 15-17 ELEVATIONS**

Drawing Status: **TOWN PLANNING**

0 1 metres 8

Drawn By: R C Scale: 1:100 @ A1 Date: 29/11/2019 Chk'd By: C S

ALBION LAND

Drawing No: **19014 - TP - 026** Rev: -

Copyright of Cornish Architects ©